

# BRIDGE CHAPEL & CHAMBER REFURBISHMENT

## DESIGN PROPOSALS

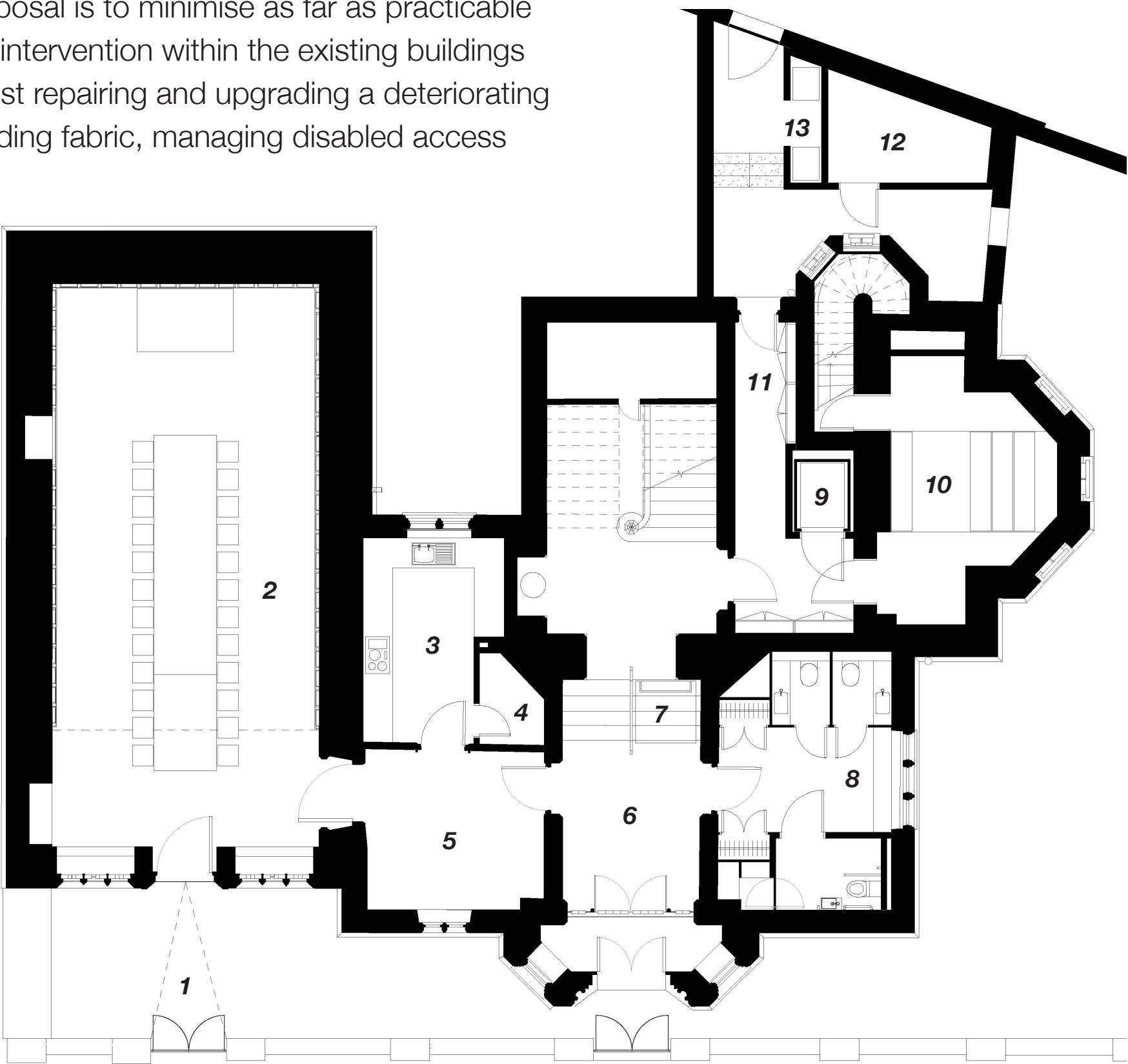
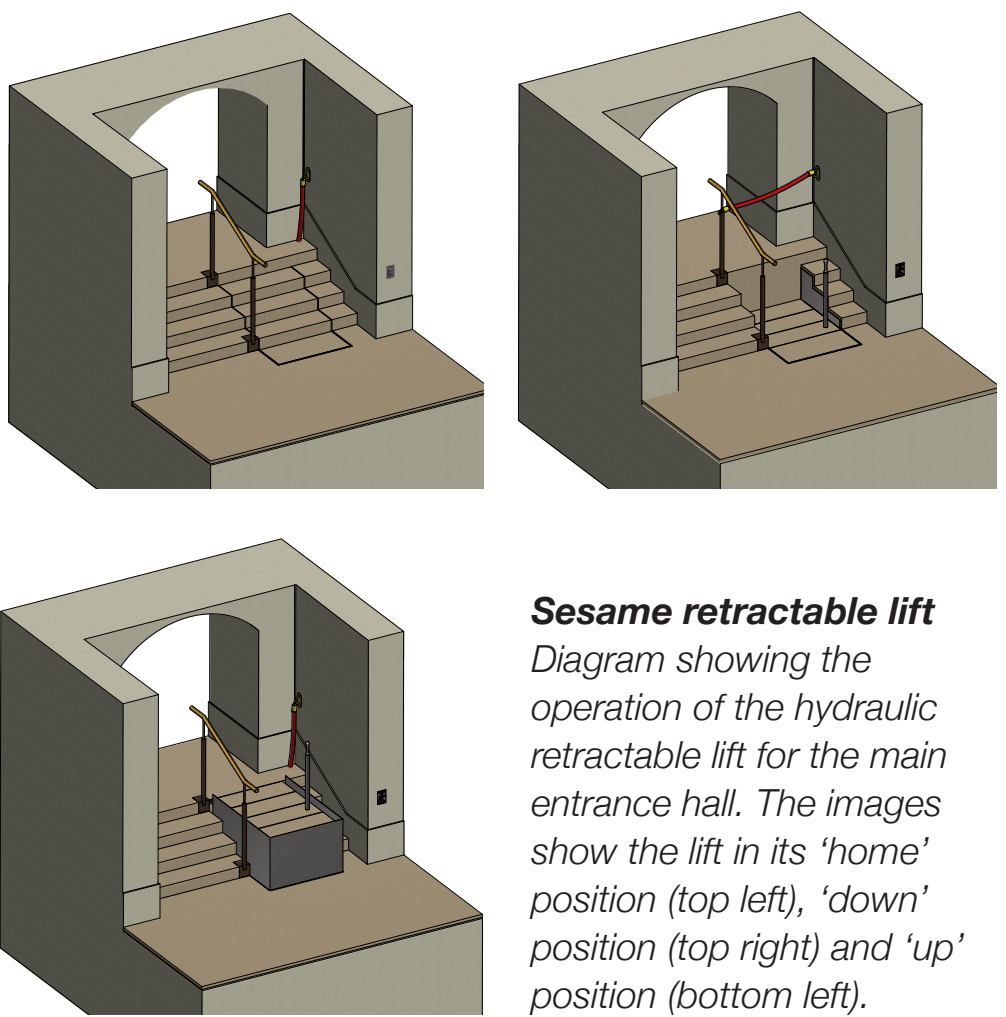
In 2018 the Trust appointed a design team, led by Hugh Broughton Architects, to develop a scheme for the refurbishment of the Bridge Chapel and reorganisation of the Bridge Chamber to meet their current and future needs. The Trust have also appointed Barker Langham Interpretative Designers to develop a digital interpretation experience for visitors, exploring the rich history of the Trust and its buildings.

The general principle underpinning the proposal is to minimise as far as practicable the intervention within the existing buildings whilst repairing and upgrading a deteriorating building fabric, managing disabled access

in line with current legislation, increasing the provision of welfare and catering facilities to meet demand during functions and public events, and providing adequate conditions for the safe storage of the Trust's historic records. Key aspects of our proposal, developed in consultation with statutory heritage bodies, include:

- Provision of level access via a shallow ramp through the Chapel main entrance;

- A sensitively integrated retractable platform lift within the entrance hall and a second lift located next to the archive to improve accessibility for both staff and members of the public;
- Sensitive fabric upgrades to the Chapel including the provision of new lighting and an interpretative digital display;
- A new kitchen to enhance the Trust's capability to cater for functions;
- New accessible toilets to meet current legislative requirements;
- New climate control and fire detection systems to enhance the preservation and security of the Trust's valuable archives.



### PROPOSED GROUND FLOOR PLAN

1 Chapel forecourt repaved for level access 2 Chapel 3 Kitchen 4 Store 5 Lobby 6 Main entrance hall 7 Retractable steps platform lift and new handrail 8 Cloakroom and toilets 9 New platform lift 10 Archive 11 Services corridor 12 New plant enclosure 13 Bin store



CGI image showing refurbished Chapel 1 New terracotta flooring replicates existing floor finish 2 Existing wall timber panelling made good with French Polish finish 3 Existing 'Mouseman' table retained 4 No 2 new chandeliers with LED lights to enhance lighting in the Chapel